



# Heating tape for highest output

The preferred use of the heating cable is for glass, quartz or ceramic devices and systems with the highest output requirements in a dry environment. Single end connection and high flexibility simplify assembly. The heating tape must be installed touch-protected. If you plan to use the heating cable on metal and at an operating temperature in excess of 650 °C, please consult our project engineers.

## Advantages:

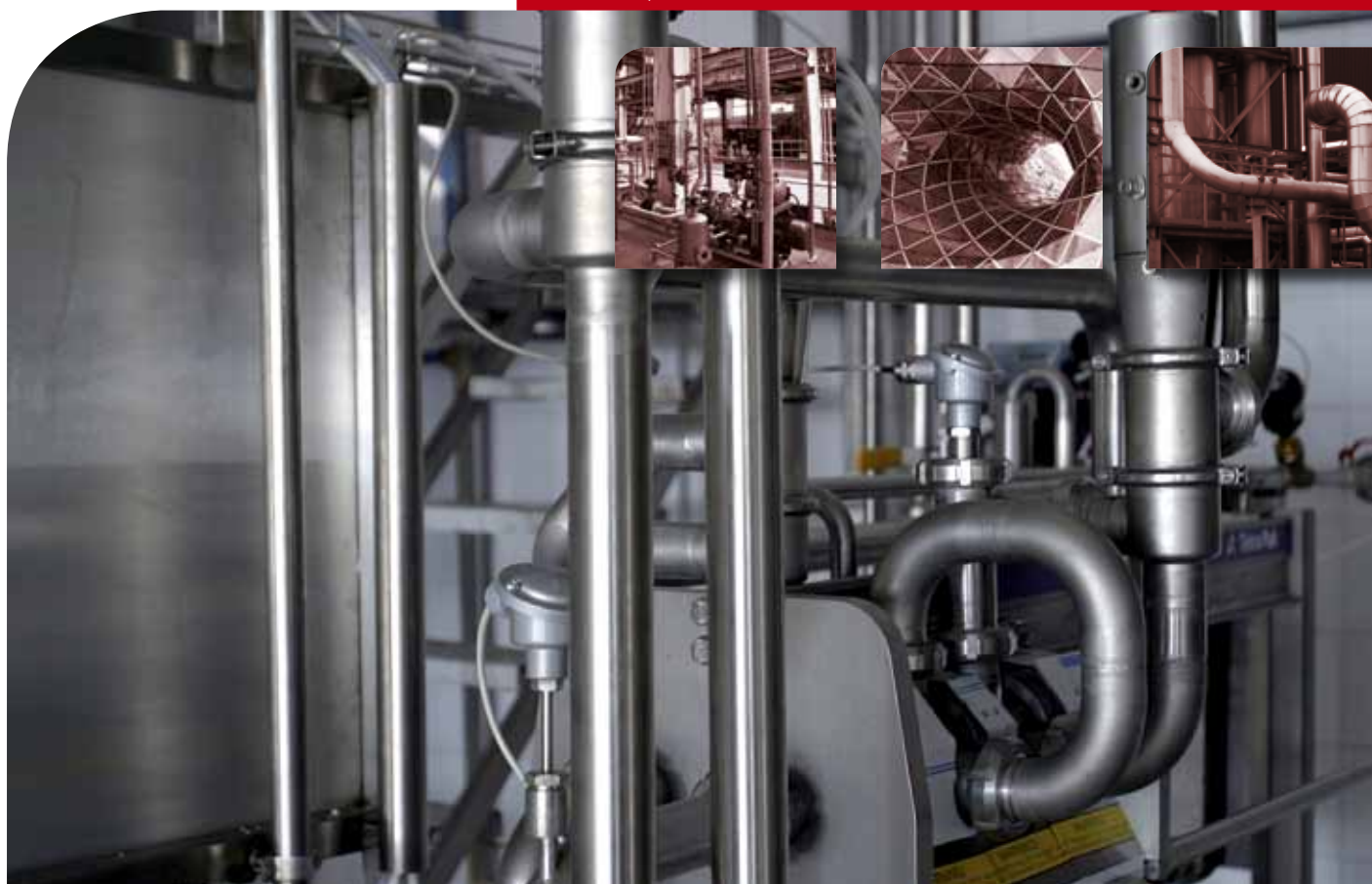
- Factory terminated
- Highest output
- Highest operating temperatures
- Ready to be used instantly
- Highly flexible
- Small bending radius
- Surface-friendly
- Single end connection

## Applications:

- Heat tracing on glass, quartz and ceramic devices
- Devices and systems with highest output needs
- Laboratory & research applications



Type **ELW-Q** up to 900 °C





## Technical information

## Type ELW-Q up to 900 °C

### Data

■ Insulation (1)	quartz textile
■ Outer jacket (2)	quartz textile
■ Nominal voltage	230 V
■ Output	350 W/m*
■ Operating temp., max.	900 °C
■ Dimensions (wxh)	approx. 35 x 6 mm
■ Bending radius, flat, min.	20 mm
■ Installation temp., min.	not restricted
■ Moisture proof	no
■ Power cable	1,2 m, without plug

### Standards

■ Manufactured according to	DIN VDE 0721 T2
■ Final inspection according to	DIN VDE 0721 T2 1,5 kV AC – 1 min



\*Note: The output per meter of heating cable and the maximum possible operating temperatures depend on the respective application. For individual cases, we recommend that you contact our engineers – we will be pleased to advise you.

Designation	Heated length (m)	Nominal output (W)	Art. No.
ELW-Q 0,5	0,60	138	0260003
ELW-Q 0,7	0,70	270	0260005
ELW-Q 1,0	1,00	319	0260008
ELW-Q 1,5	1,55	533	0260012
ELW-Q 2,0	2,00	696	0260014
ELW-Q 2,5	2,50	882	0260017

Not all resistances are available ex stock – please contact us.  
Other lengths upon request.  
Resistance tolerance: +/- 5 %  
Lengths tolerance ± 2%, max. ± 0,25 m.

Designation	Heated length (m)	Nominal output (W)	Art. No.
ELW-Q 3,0	3,00	1062	0260020
ELW-Q 4,0	4,00	1438	0260023
ELW-Q 5,0	5,00	1653	0260026

Cables shall neither intersect nor contact.  
Provide protection by means of circuit breaker FI 30.  
Please observe the standards IEC 62395-2, EN 60519-10.